

## Background

The national immunisation uptake statistics, based on available data, for Quarter 2 2017 are presented in this report. These immunisation uptake statistics relate to children at 12 (born between 01/04/2016 and 30/06/2016) and 24 (born between 01/04/2015 and 30/06/2015) months of age in Quarter 2-2017. These children were recommended the vaccines outlined in table 1. The immunisation schedule changed in 2015 for children born on or after July 1<sup>st</sup> 2015 after the National Immunisation Advisory Committee (NIAC) recommended changing the meningococcal C (MenC) immunisation schedule in the primary childhood programme from three doses at 4, 6 and 13 months to two doses at 4 and 13 months because of evidence that a single dose of MenC vaccine provides protection for the first year of life. Please note the immunisation schedule changed in 2016 for children born on or after October 1<sup>st</sup> 2016. Please see the HSE-National Immunisation Office (NIO) website at [www.immunisation.ie](http://www.immunisation.ie) for current and detailed information on the Irish primary childhood immunisation schedule and also recommended vaccinations for older children and adults.

For children at 12 months of age in Quarter 2 2017, immunisation uptake rates of three doses of vaccines against diphtheria (D<sub>3</sub>), pertussis (P<sub>3</sub>), tetanus (T<sub>3</sub>), *Haemophilus influenzae* type b (Hib<sub>3</sub>), polio (Polio<sub>3</sub>), hepatitis B (HepB<sub>3</sub>), one dose of meningococcal serogroup C conjugate vaccine (MenC<sub>1</sub>), two doses of pneumococcal conjugate vaccine (PCV<sub>2</sub>) and one dose of BCG vaccine are reported.

For children at 24 months of age in Quarter 2 2017, immunisation uptake rates of three doses of vaccines against diphtheria (D<sub>3</sub>), pertussis (P<sub>3</sub>), tetanus (T<sub>3</sub>), *Haemophilus influenzae* type b (Hib<sub>3</sub>), polio (Polio<sub>3</sub>), hepatitis B (HepB<sub>3</sub>), meningococcal group C (MenC<sub>3</sub>) and pneumococcal conjugate vaccine (PCV<sub>3</sub>) and one dose of vaccine against measles, mumps and rubella (MMR<sub>1</sub>) are reported. One dose of vaccine against *Haemophilus influenzae* type b (Hib<sub>b</sub>), one dose of meningococcal group C vaccine (MenC<sub>b</sub>) and one dose of pneumococcal conjugate vaccine (PCV<sub>b</sub>) given on or after 12 months of age are also reported.

The uptake statistics are also presented in this report by Community Healthcare Organisation (CHO) and Local Health Office (LHO). While there are 32 LHOs the immunisation uptake data for North Lee and South Lee are reported as a combined figure. The uptake rates presented here were rounded to zero decimal place.

**Table 1.** Primary childhood immunisation schedule for children born between 01/07/2008 and 30/09/2016

Age	Children born 01/07/2008 to 30/06/2015	Children born 01/07/2015 to 30/09/2016
Birth	BCG	BCG
2 months	DTaP/Hib/IPV/HepB (6 in 1) + PCV	DTaP/Hib/IPV/HepB (6 in 1) + PCV
4 months	DTaP/Hib/IPV/HepB (6 in 1) + MenC	DTaP/Hib/IPV/HepB (6 in 1) + MenC
6 months	DTaP/Hib/IPV/HepB (6 in 1) + PCV + MenC	DTaP/Hib/IPV/HepB (6 in 1) + PCV
12 months	MMR + PCV	MMR + PCV
13 months	MenC + Hib	MenC + Hib

Please note the primary immunisation schedule changed in 2015 for children born on or after 01/07/2015 and changed in 2016 for children born on or after October 1<sup>st</sup> 2016. Please see the HSE-National Immunisation Office (NIO) website at [www.immunisation.ie](http://www.immunisation.ie) for current and detailed information on the Irish primary childhood immunisation schedule and also recommended vaccinations for older children and adults

BCG	Bacille Calmette Guerin vaccine
DTaP	Diphtheria, Tetanus and acellular Pertussis vaccine
HepB	Hepatitis B vaccine
Hib	<i>Haemophilus influenzae</i> type b vaccine
IPV	Inactivated Polio Virus vaccine
MenC	Meningococcal group C vaccine
MMR	Measles, Mumps and Rubella vaccine
PCV	Pneumococcal Conjugate Vaccine

## Immunisation uptake among children at 12 months of age in Quarter 2-2017

### National

- Immunisation uptake rates in children 12 months of age in Q2-2017 are presented by Community Healthcare Organisation (CHO) in table 2. National immunisation uptake rates were 91% for D<sub>3</sub>, T<sub>3</sub>, P<sub>3</sub>, Hib<sub>3</sub>, Polio<sub>3</sub>, HepB<sub>3</sub> and PCV<sub>2</sub> and 94% for MenC<sub>1</sub>.
- BCG vaccine stock in all areas expired at the end of April 2015. The HSE continues to experience ongoing delays with the supply of BCG vaccine. This continues to be a Europe wide issue. The number of cases of TB has been steadily falling in Ireland. The number of cases of TB for the years 2014 and 2015 was at the lowest level since records began. Most European countries do not give BCG vaccine to all babies. The National Immunisation Advisory Committee (NIAC), an independent expert group on immunisation and the Health Information and Quality Authority (HIQA) have both recommended that BCG vaccine does not now need to be given routinely to all babies in Ireland. So your baby is not at risk of TB and you do not need to delay any of your baby's injections  
<http://www.hse.ie/eng/health/Immunisation/news/BCG17.html>
- Figure 1 presents the national uptake rates at 12 months for each vaccine from Q3-2000 to Q2-2017. Compared to Q1-2017, national uptake rates in Q2-2017 for D<sub>3</sub>, T<sub>3</sub>, P<sub>3</sub>, Hib<sub>3</sub>, Polio<sub>3</sub>, HepB<sub>3</sub> and PCV<sub>2</sub> were unchanged while MenC<sub>1</sub> declined by 1% (figure 1).

### Community Healthcare Organisation (CHO)

- Among the CHOs, the uptake rates for D<sub>3</sub>, T<sub>3</sub>, P<sub>3</sub>, Hib<sub>3</sub>, Polio<sub>3</sub> and HepB<sub>3</sub> ranged from 88% to 94%, MenC<sub>1</sub> ranged from 92% to 96% and PCV<sub>2</sub> ranged from 87% to 94%, (Table 2).

### Local Health Office (LHO)

- The immunisation uptake rates by LHO are shown in appendix 1.
- D<sub>3</sub>, MenC<sub>1</sub> and PCV<sub>2</sub> immunisation uptake rates are mapped by LHO in figures 2-4.
- The target uptake rate of 95% was reached in three LHOs for D<sub>3</sub>, T<sub>3</sub>, P<sub>3</sub>, Hib<sub>3</sub>, Polio<sub>3</sub> and HepB<sub>3</sub>, four for PCV<sub>2</sub> and in 19 LHOs for MenC<sub>1</sub>.

**Table 2.** Immunisation uptake (%) at 12 months in cohort born 01/04/2016–30/06/2016

Community Healthcare Organisation/LHO*	No. in cohort <sup>#</sup>	BCG	D <sub>3</sub> T <sub>3</sub>	P <sub>3</sub>	Hib <sub>3</sub>	Polio <sub>3</sub>	HepB <sub>3</sub>	MenC <sub>1</sub>	PCV <sub>2</sub>
<b>CHO1</b> (CN/MN, DL, SO/LM)	1233	0.0†	94	94	94	94	94	95	94
<b>CHO2</b> (G, MO, RN)	1441	0.0	93	93	93	93	93	96	93
<b>CHO3</b> (CE, L, TN)	1269	0.0	89	89	89	89	89	94	89
<b>CHO4</b> (NC, NSL, WC, KY)	2211	0.0	91	91	91	91	91	94	88
<b>CHO5</b> (CW/KK, TS, WD, WX)	1629	0.2	90	90	90	90	90	95	90
<b>CHO6</b> (DS, DSE, WW)	1286	0.0	91	91	91	91	91	95	92
<b>CHO7</b> (DSC, DSW, DW, KE)	2546	0.1	91	91	91	91	91	95	92
<b>CHO8</b> (LS/OY, LD/WH, LH, MH)	2225	0.0†	92	92	92	92	92	95	93
<b>CHO9</b> (DNW, DNC, DN)	2262	0.0	88	88	88	88	88	92	87
<b>Ireland</b>	16102†	<b>0.04†</b>	<b>91</b>	<b>91</b>	<b>91</b>	<b>91</b>	<b>91</b>	<b>94</b>	<b>91</b>

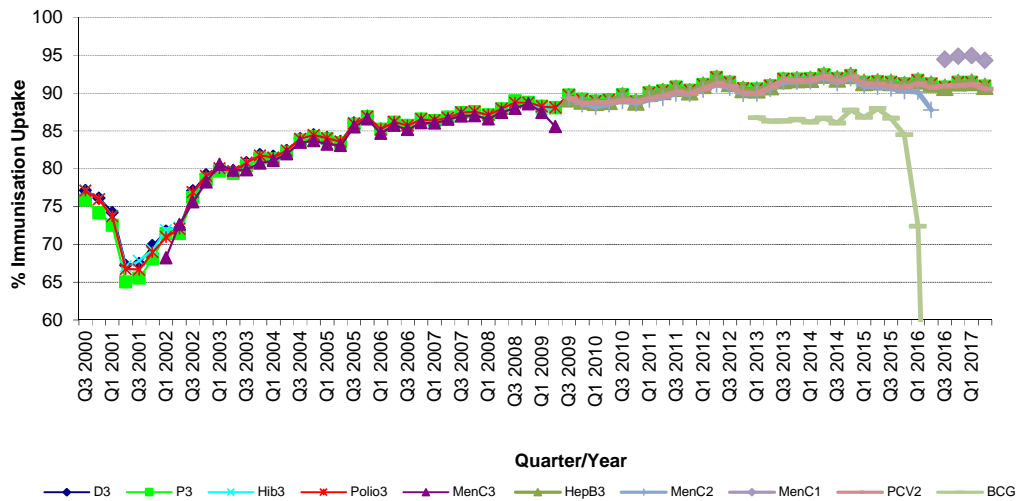
na = not available at this time

\*Shown in brackets are the LHOs in each CHO. Please see Appendix 3 to translate LHO codes. The geographical boundaries of the CHOs are shown at [http://www.hse.ie/eng/services/publications/corporate/CHO\\_Chapter\\_1.pdf](http://www.hse.ie/eng/services/publications/corporate/CHO_Chapter_1.pdf)

<sup>#</sup> The denominator/number in cohort varied slightly according to vaccine. D<sub>3</sub>T<sub>3</sub> cohorts are shown here.

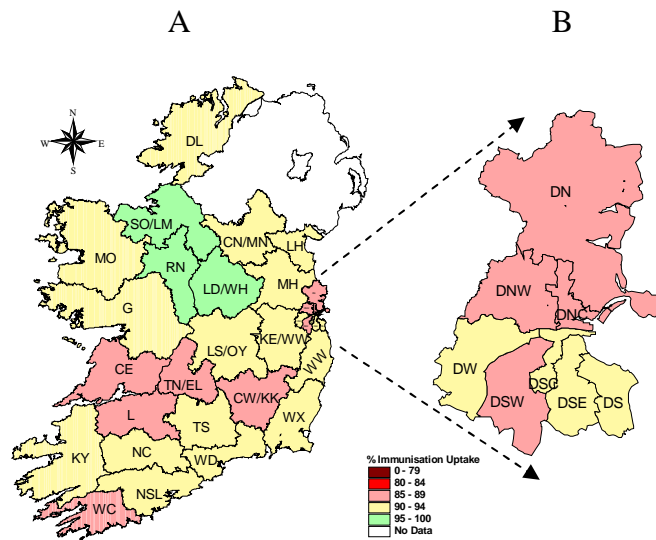
†Number in cohort for BCG is 14,464. BCG data are unavailable for the former HSE North Eastern Area i.e. CN/MN, LH, MH; therefore CHO1 and CHO8 BCG data are incomplete. At the time of writing of this report the HSE continues to experience on-going delays with the supply of BCG vaccine. This continues to be a Europe wide issue. See point 2 above regarding BCG vaccine stock in Ireland.

## Immunisation uptake among children at 12 months of age in Quarter 2-2017

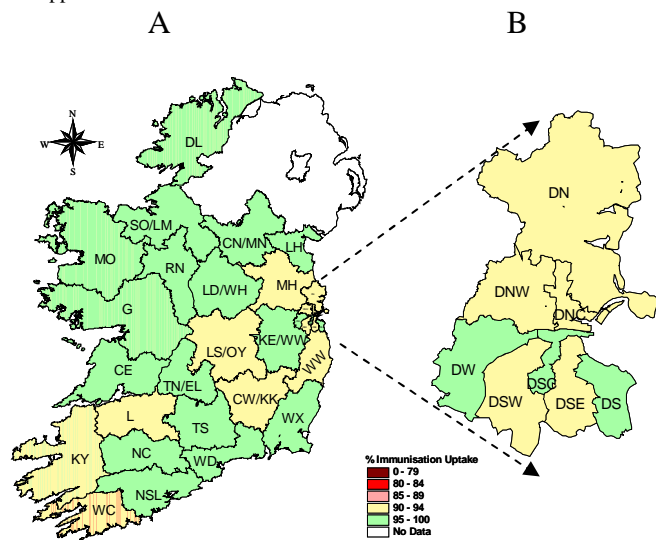


**Figure 1.** National quarterly immunisation uptake rates at 12 months  
*X-axis ranges from 60-100%.*

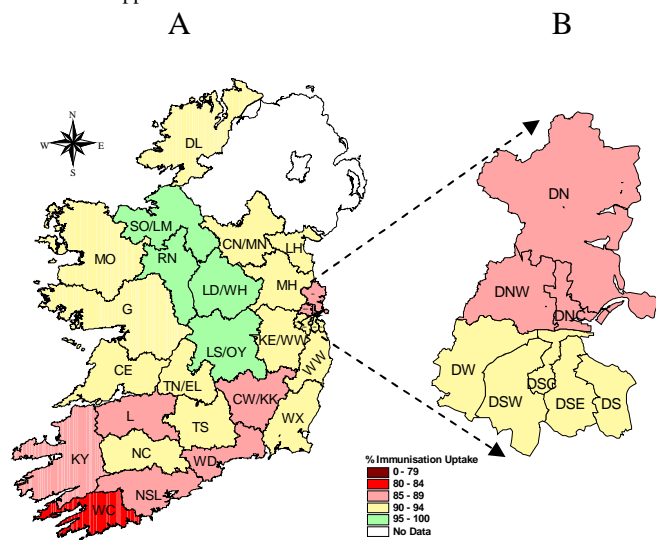
Since  $T_3$  uptake is identical to  $D_3$  uptake only  $D_3$  uptake figures presented. The Q3-2008 MenC<sub>3</sub> uptake figure is based on data from six of the eight HSE Areas. The Q1-2009 HSE-Eastern Area  $D_3$ ,  $P_3$ ,  $T_3$ , Polio<sub>3</sub> and MMR<sub>1</sub> uptake figures exclude those born on the 31/03/2007. The Q3-2009 figures are incomplete as two HSE Areas were unable to provide data, two additional areas were unable to provide MenC<sub>2</sub> data and one additional area was unable to provide PCV<sub>2</sub> data. The Q4-2009 figures are incomplete as three HSE Areas were unable to provide data. The Q1-2010 figures are incomplete as two HSE Areas were unable to provide data and three were unable to provide MenC<sub>2</sub> data. The Q2-2010 figures are incomplete as two HSE Areas were unable to provide data. The Q4-2010 figures are incomplete as one HSE Area was unable to provide data. BCG uptake data are only displayed in this graph from Q1 2013 as BCG uptake data were available for only five of the eight HSE-Areas (this includes data from the HSE-Southern Area which relates to Kerry data only) from Q3 2003 to Q2 2009 (except Q3 2004 when HSE-Southern Area data were not available), for three HSE-Areas in Q3 2009, for two HSE-Areas in Q4 2009, for three HSE-Areas in Q1 2010 and Q2 2010, for five HSE-Areas in Q4 2010, Q1 2011 and Q2 2011, for six HSE-Areas in Q3 2011 to Q4 2012 and for seven HSE Areas from Q1 2013. From Q3 2011 to Q3 2014 HSE Western Area BCG data was not available by LHO, uptake was provided for the HSE Western Area as a whole. In Q4 2014 BCG data was available for Galway and Roscommon- the BCG denominator for HSE Western Area in Q4 2014 was the sum of the Galway and Roscommon denominators. Since Q1 2015 BCG data was available for Galway, Mayo and Roscommon LHOs. See point 2 on the previous page regarding BCG vaccine stock in Ireland since April 2015.



**Figure 2.** D<sub>3</sub> immunisation uptake rates (%) by LHO, in those 12 months of age in Quarter 2-2017, in (A) Ireland and (B) Dublin. Please see Appendix 3 to translate LHO codes.



**Figure 3.** MenC<sub>1</sub> immunisation uptake rates (%) by LHO, in those 12 months of age in Quarter 2-2017, in (A) Ireland and (B) Dublin. Please see Appendix 3 to translate LHO codes.



**Figure 4.** PCV<sub>2</sub> immunisation uptake rates (%) by LHO, in those 12 months of age in Quarter 2-2017, in (A) Ireland and (B) Dublin. Please see Appendix 3 to translate LHO codes.

## Immunisation uptake among children 24 months of age in Quarter 2-2017

### National

- National uptake rates were 95% for D<sub>3</sub>, T<sub>3</sub>, P<sub>3</sub>, Hib<sub>3</sub> and Polio<sub>3</sub>, 94% for HepB<sub>3</sub>, 92% for MMR<sub>1</sub>, 90% for Hib<sub>b</sub> (CHO3 Hib<sub>b</sub> data were unavailable in Q2 2017) and PCV<sub>3</sub> and 86% for MenC<sub>3</sub> (table 3). Compared to the previous quarter national uptake rates in Q2-2017 declined by 1% for HepB<sub>3</sub> and were unchanged for the remainder (figure 5).
- In total, all nine CHOs were able to provide uptake data on MenC<sub>b</sub> and PCV<sub>b</sub> for the first time in Q2-2017. Uptake was 88% for MenC<sub>b</sub> and 92% for PCV<sub>b</sub>. In Quarter 2 2017, compared to the eight CHOs that were in a position to provide MenC<sub>b</sub> and PCV<sub>b</sub> data in Quarter 1 2017 uptake of MenC<sub>b</sub> decline by 1% and PCV<sub>b</sub> was unchanged (figure 5).
- Figure 5 presents the national uptake rates at 24 months for each vaccine from Q1-1999 to Q2-2017.

### Community Healthcare Organisations (CHOs)

- The target uptake of 95% was reached for D<sub>3</sub>, P<sub>3</sub>, T<sub>3</sub>, Hib<sub>3</sub> and Polio<sub>3</sub> in six CHOs, in five for HepB<sub>3</sub>, in two for PCV<sub>b</sub>, in one for Hib<sub>b</sub>, MenC<sub>b</sub>, PCV<sub>3</sub> and MMR<sub>1</sub> and in none for MenC<sub>3</sub> (table 3).

### Local Health Office (LHO)

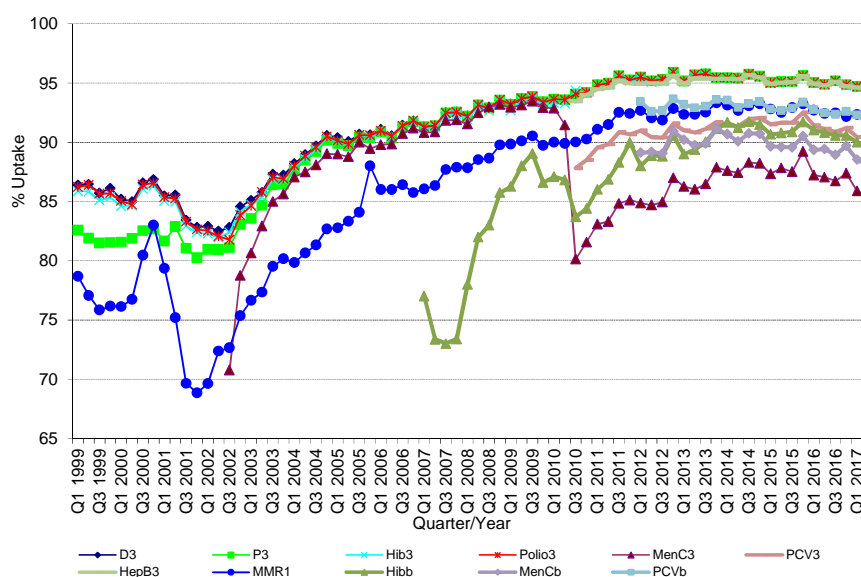
- Immunisation uptake rates in children 24 months of age in Q2-2017 are presented by LHO in Appendix 2.
- D<sub>3</sub>, Hib<sub>b</sub>, MenC<sub>3</sub>, MenC<sub>b</sub>, PCV<sub>3</sub>, PCV<sub>b</sub> and MMR<sub>1</sub> immunisation uptake rates are mapped by LHO in figures 6-12.
- The target uptake of 95% was reached in 19 LHOs for D<sub>3</sub>, T<sub>3</sub>, P<sub>3</sub>, Hib<sub>3</sub>, Polio<sub>3</sub> and HepB<sub>3</sub>, 10 for PCV<sub>b</sub>, 8 for MMR<sub>1</sub>, 4 for Hib<sub>b</sub> and PCV<sub>3</sub>, 3 for MenC<sub>3</sub> and 2 for MenC<sub>b</sub>.

**Table 3.** Immunisation uptake (%) at 24 months in cohort born 01/04/2015–30/06/2015

Community Healthcare Organisation/LHO	No. in Cohort*	D <sub>3</sub> /T <sub>3</sub> /P <sub>3</sub> /Polio <sub>3</sub>	Hib <sub>3</sub>	Hib <sub>b</sub>	HepB <sub>3</sub>	MenC <sub>3</sub>	MenC <sub>b</sub>	PCV <sub>3</sub>	PCV <sub>b</sub>	MMR <sub>1</sub>
CHO1 (CN/MN, DL, SO/LM)	1292	95	95	92	94	87	90	89	91	92
CHO2 (G, MO, RN)	1514	97	97	95	97	94	96	98	96	95
CHO3 (CE, L, TN)	1299	94	94	na	94	86	88	91	92	92
CHO4 (NC, NSL, WC, KY)	2277	96	95	91	95	85	89	90	92	93
CHO5 (CW/KK, TS, WD, WX)	1684	96	96	90	96	86	90	93	95	94
CHO6 (DS, DSE, WW)	1212	93	93	88	93	84	87	89	91	91
CHO7 (DSC, DSW, DW, KE)	2474	95	95	88	95	85	88	90	92	92
CHO8 (LS/OY, LD/WH, LH, MH)	2220	96	96	92	96	87	86	91	90	93
CHO9 (DNW, DNC, DN)	2222	91	91	83	91	79	82	85	87	87
<b>Ireland</b>	<b>16194</b>	<b>95</b>	<b>95</b>	<b>90</b>	<b>94</b>	<b>86</b>	<b>88</b>	<b>90</b>	<b>92</b>	<b>92</b>

Please see Appendix 3 to translate LHO codes  
na = not available

\* As the denominator/number in cohort varied slightly according to vaccine D<sub>3</sub>T<sub>3</sub> cohorts are shown here



**Figure 5.** National quarterly immunisation uptake rates at 24 months

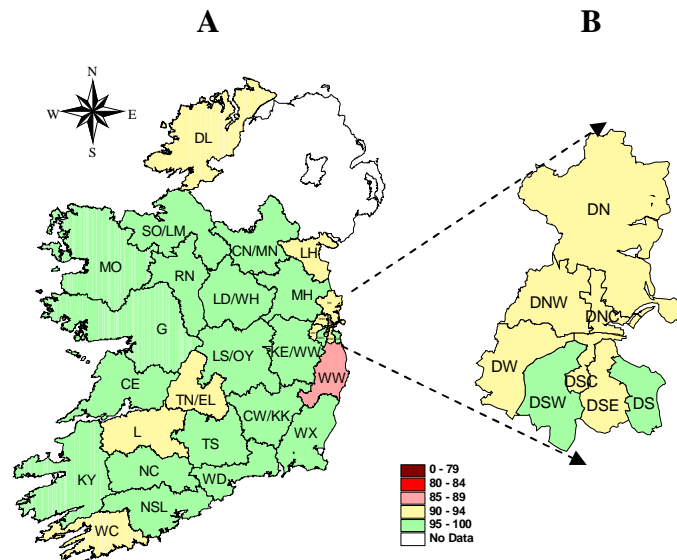
**Notes:** The Q4-2005 MMR<sub>1</sub> figure is based on data from seven of the eight HSE-Areas. The Q1-2006 MMR<sub>1</sub> figure includes the HSE-Eastern Area figure that is an estimate only. The Q1-2007, Q3-2007, Q2-2008 and Q3-2008 Hib<sub>b</sub> figures are based on data from seven of the eight HSE Areas. In Q1-2008 the HSE-SE changed their Hib<sub>b</sub> data extraction method compared to previous quarters: in Q1-2008 the uptake of Hib<sub>b</sub> in the HSE-SE was 83% compared to 53% in Q4-2007. The Q3-2008 MenC<sub>3</sub> figure is based on data from six of the eight HSE Areas. The Q1-2009 HSE-Eastern Area D<sub>3</sub>, P<sub>3</sub>, T<sub>3</sub>, Polio<sub>3</sub> and MMR<sub>1</sub> uptake figures exclude those born on the 31/03/2007. The Q2-2009 HSE-Eastern Area Hib<sub>b</sub> uptake figures exclude uptake figures from Dublin North. The Q4-2009 figures are based on data from seven of the eight HSE Areas. The Q4-2009 Hib<sub>b</sub> figures also exclude uptake figures from Dublin North. The Q1-2010 figures are based on data from six of the eight HSE Areas. The Q1-2010 Hib<sub>b</sub> figures also exclude uptake figures from Dublin North. The Q2-2010 and Q4-2010 figures are based on data from the eight HSE Areas. MenC<sub>b</sub> and PCV<sub>b</sub> data were only available for 6 of the 8 HSE Areas from Q1 2012 to Q4 2014. MenC<sub>b</sub> and PCV<sub>b</sub> data were only available for 8 CHOs from Q1 2015-Q1 2017 but are available for all since Q2 2017. Q2 2017 CHO3 Hib<sub>b</sub> figures were unavailable.

## Conclusions

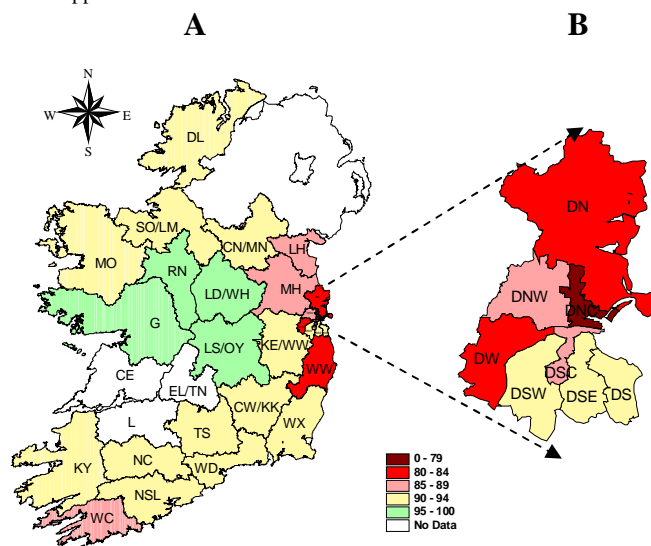
In Quarter 2-2017, national uptake rates at 24 months for D<sub>3</sub>, T<sub>3</sub>, P<sub>3</sub>, Hib<sub>3</sub> and Polio<sub>3</sub> reached the target of 95%. Uptake of HepB<sub>3</sub> was 94%. Uptake of the remaining vaccines are lower; doses of these remaining vaccines are given at 12 and 13 months of age suggesting that parents are less likely to get the necessary vaccines for their children at this age. Uptake of HepB<sub>3</sub> and MenC<sub>b</sub> decreased by one percent in Quarter 2-2017 compared to the previous quarter.

## Acknowledgements

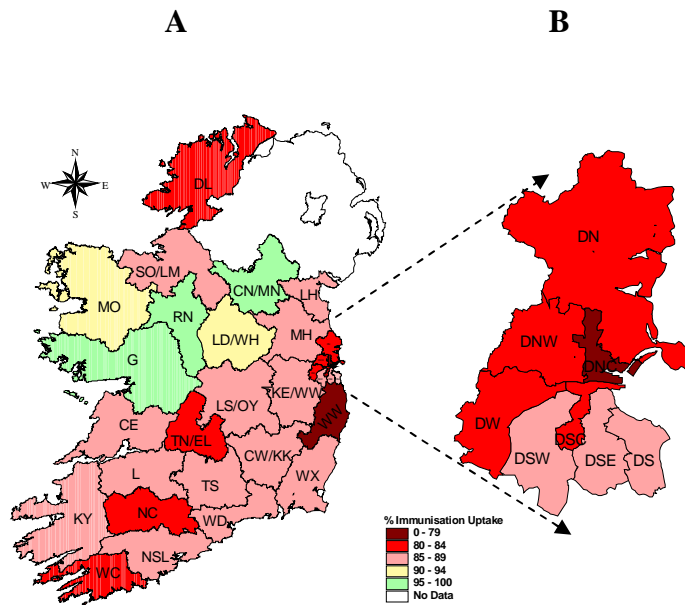
HPSC would like to thank all those involved in childhood immunisation including the General Practitioners, Practice Nurses, HSE Areas, Public Health Nurses, Immunisation Co-ordinators, Specialists in Public Health Medicine, Surveillance Scientists and Systems Analysts for their assistance.



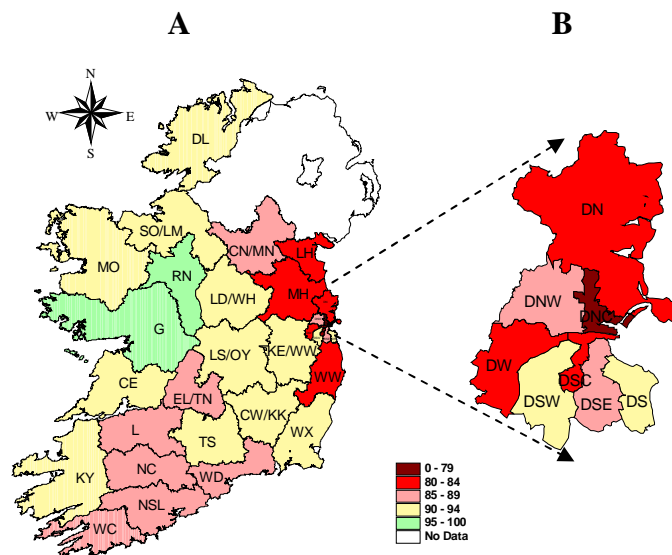
**Figure 6.** D<sub>3</sub> immunisation uptake rates (%) by LHO, in those 24 months of age in Quarter 2-2017, in (A) Ireland and (B) Dublin. Please see Appendix 3 to translate LHO codes.



**Figure 7.** Hib<sub>6</sub> immunisation uptake rates (%) by LHO, in those 24 months of age in Quarter 2-2017, in (A) Ireland and (B) Dublin. Please see Appendix 3 to translate LHO codes.

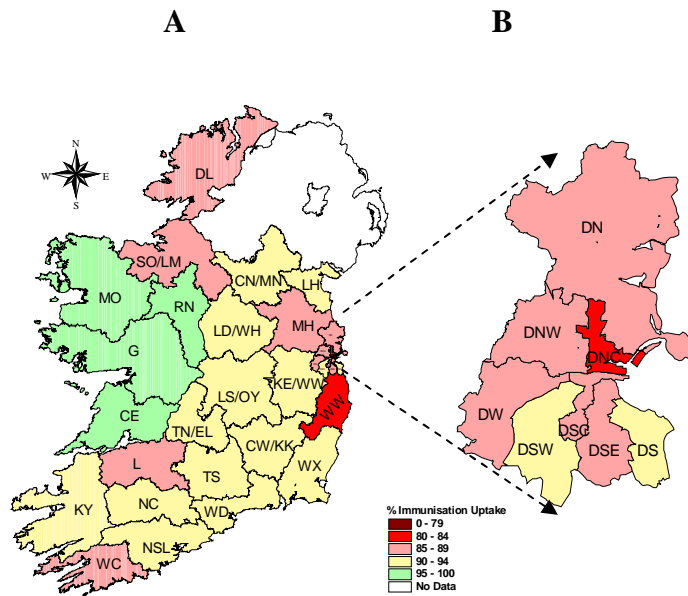


**Figure 8.** MenC<sub>3</sub> immunisation uptake rates (%) by LHO, in those 24 months of age in Quarter 2-2017, in (A) Ireland and (B) Dublin. Please see Appendix 3 to translate LHO codes.

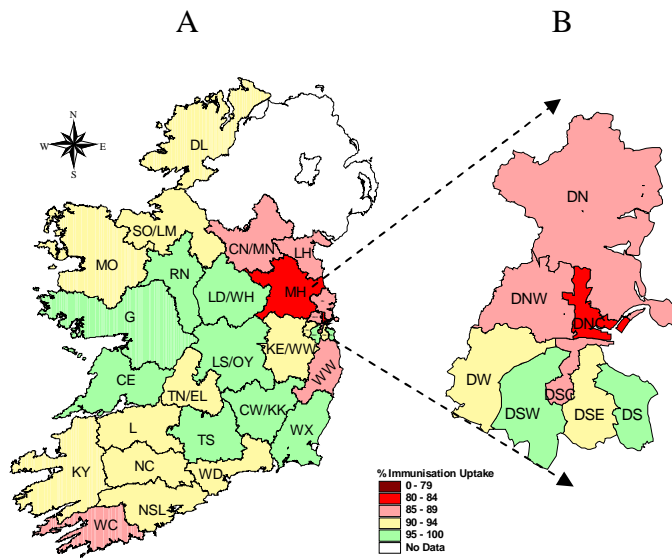


**Figure 9.** MenC<sub>b</sub> immunisation uptake rates (%) by LHO, in those 24 months of age in Quarter 2-2017, in (A) Ireland and (B) Dublin. Please see Appendix 3 to translate LHO codes.

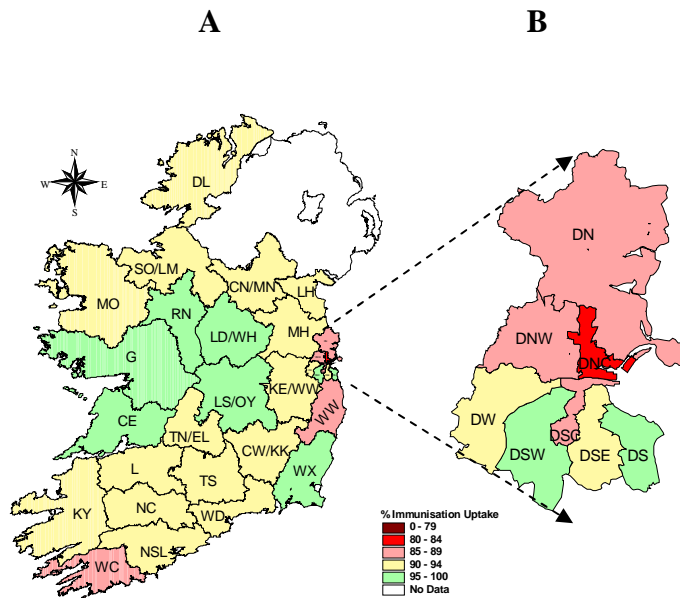




**Figure 10.** PCV<sub>3</sub> immunisation uptake rates (%) by LHO, in those 24 months of age in Quarter 2-2017, in (A) Ireland and (B) Dublin. Please see Appendix 3 to translate LHO codes.



**Figure 11.** PCV<sub>6</sub> immunisation uptake rates (%) by LHO, in those 24 months of age in Quarter 2-2017, in (A) Ireland and (B) Dublin. Please see Appendix 3 to translate LHO codes.



**Figure 12.** MMR<sub>1</sub> immunisation uptake rates (%) by LHO, in those 24 months of age in Quarter 2-2017, in (A) Ireland and (B) Dublin. Please see Appendix 3 to translate LHO codes.

## Appendix 1

Immunisation uptake (%) at 12 months of age in cohort born 01/04/2016-30/06/2016											
Community Healthcare Organisation (CHO)	LHO/CHO	No. in cohort for BCG*	No. in cohort for D <sub>3</sub> T <sub>3</sub> #	Immunisation Uptake (%)							
				BCG*	D <sub>3</sub> T <sub>3</sub>	P <sub>3</sub>	Hib <sub>3</sub>	Polio <sub>3</sub>	HepB <sub>3</sub>	MenC <sub>1</sub>	PCV <sub>2</sub>
CHO1	Cavan/Monaghan	na	439	na	94	94	94	94	94	95	94
	Donegal	500	500	0	93	93	92	93	92	95	92
	Sligo/Leitrim	294	294	0	96	96	96	96	96	97	95
	<b>CHO1 Total*</b>	<b>794</b>	<b>1233</b>	<b>0</b>	<b>94</b>	<b>94</b>	<b>94</b>	<b>94</b>	<b>94</b>	<b>94</b>	<b>95</b>
CHO2	Galway	872	872	0	91	91	91	91	91	95	92
	Mayo	376	376	0	93	93	93	93	93	96	94
	Roscommon	193	193	0	99	99	99	99	99	99	99
	<b>CHO2 Total</b>	<b>1441</b>	<b>1441</b>	<b>0</b>	<b>93</b>	<b>93</b>	<b>93</b>	<b>93</b>	<b>93</b>	<b>93</b>	<b>96</b>
CHO3	Clare	376	376	0	89	89	89	89	89	95	90
	Limerick	461	461	0	89	89	89	89	89	92	89
	Tipperary NR/East Limerick	432	432	0	89	89	89	89	89	95	90
	<b>CHO3 Total</b>	<b>1269</b>	<b>1269</b>	<b>0</b>	<b>89</b>	<b>89</b>	<b>89</b>	<b>89</b>	<b>89</b>	<b>89</b>	<b>94</b>
CHO4	North Cork	285	284	0	94	94	93	94	94	96	91
	North South Lee	1332	1323	0	91	91	91	91	91	95	88
	West Cork	176	174	0	86	86	86	86	86	90	83
	Kerry	433	430	0	90	90	90	90	90	90	86
<b>CHO4 Total</b>	<b>2226</b>	<b>2211</b>	<b>0</b>	<b>91</b>	<b>91</b>	<b>91</b>	<b>91</b>	<b>91</b>	<b>91</b>	<b>94</b>	<b>88</b>
CHO5	Carlow/Kilkenny	443	443	0	86	86	86	86	86	92	85
	South Tipperary	292	292	1	93	93	93	93	93	96	93
	Waterford	414	414	0	91	91	91	91	91	97	89
	Wexford	480	480	0	92	92	92	92	92	96	92
<b>CHO5 Total</b>	<b>1629</b>	<b>1629</b>	<b>0.2</b>	<b>90</b>	<b>90</b>	<b>90</b>	<b>90</b>	<b>90</b>	<b>90</b>	<b>95</b>	<b>90</b>
CHO6	Dublin South	433	433	0	92	92	92	92	92	96	92
	Dublin South East	455	455	0	91	91	91	91	91	94	91
	Wicklow	398	398	0	91	91	91	91	91	93	92
	<b>CHO6 Total</b>	<b>1286</b>	<b>1286</b>	<b>0</b>	<b>91</b>	<b>91</b>	<b>91</b>	<b>91</b>	<b>91</b>	<b>91</b>	<b>95</b>
CHO7	Dublin South City	417	417	0.5	93	93	93	93	93	95	93
	Dublin South West	623	623	0.0	89	89	89	89	89	94	91
	Dublin West	603	603	0.2	90	90	90	90	90	90	90
	Kildare/West Wicklow	903	903	0.0	92	92	92	92	92	92	95
<b>CHO7 Total</b>	<b>2546</b>	<b>2546</b>	<b>0.1</b>	<b>91</b>	<b>91</b>	<b>91</b>	<b>91</b>	<b>91</b>	<b>91</b>	<b>95</b>	<b>92</b>
CHO8	Laois/Offaly	535	535	0	93	93	93	93	93	93	95
	Longford/Westmeath	476	476	0	96	96	96	96	96	96	96
	Louth	na	459	na	91	91	91	91	91	95	91
	Meath	na	755	na	91	91	91	91	91	94	91
<b>CHO8 Total*</b>	<b>1011</b>	<b>2225</b>	<b>0</b>	<b>92</b>	<b>92</b>	<b>92</b>	<b>92</b>	<b>92</b>	<b>92</b>	<b>95</b>	<b>93</b>
CHO9	Dublin North West	821	821	0	87	87	87	87	87	91	87
	Dublin North Central	495	495	0	85	85	85	85	85	91	85
	Dublin North	946	946	0	89	89	89	89	89	93	88
	<b>CHO9 Total</b>	<b>2262</b>	<b>2262</b>	<b>0</b>	<b>88</b>	<b>88</b>	<b>88</b>	<b>88</b>	<b>88</b>	<b>88</b>	<b>92</b>
<b>Ireland *</b>		<b>14464</b>	<b>16102</b>	<b>0.04</b>	<b>91</b>	<b>91</b>	<b>91</b>	<b>91</b>	<b>91</b>	<b>94</b>	<b>91</b>

na=not available

\*BCG data were unavailable for Cavan/Monaghan, Louth and Meath

• BCG vaccine stock in all areas expired at the end of April 2015. The HSE continues to experience ongoing delays with the supply of BCG vaccine. This continues to be a Europe wide issue. The number of cases of TB has been steadily falling in Ireland. The number of cases of TB for the years 2014 and 2015 was at the lowest level since records began. Most European countries do not give BCG vaccine to all babies. The National Immunisation Advisory Committee (NIAC), an independent expert group on immunisation and the Health Information and Quality Authority (HIQA) have both recommended that BCG vaccine does not now need to be given routinely to all babies in Ireland. So your baby is not at risk of TB and you do not need to delay any of your baby's injections [http://www.hse.ie/eng/health/immunisation/new\\_s/BCG17.html](http://www.hse.ie/eng/health/immunisation/new_s/BCG17.html)

#The denominator/number in cohort varied slightly according to vaccine. D<sub>3</sub>T<sub>3</sub> cohort shown here.

Please note while North Lee and South Lee are two separate LHOs their combined immunisation uptake data are reported here.

## Appendix 2

Immunisation uptake (%) at 24 months of age in cohort born 01/04/2015-30/06/2015													
Community Healthcare Organisation (CHO)	LHO/CHO	No. in cohort for D <sub>3</sub> T <sub>3</sub> *	Immunisation Uptake (%)										
			D <sub>3</sub> T <sub>3</sub>	P <sub>3</sub>	Hib <sub>3</sub>	Hib <sub>b</sub>	Polio <sub>3</sub>	HepB <sub>3</sub>	MenC <sub>3</sub>	MenC <sub>b</sub>	PCV <sub>3</sub>	PCV <sub>b</sub>	MMR <sub>1</sub>
CHO1	Cavan/Monaghan	477	95	95	95	91	95	95	95	86	91	88	92
	Donegal	515	94	94	94	91	94	93	80	90	87	93	92
	Sligo/Leitrim	300	97	97	97	94	97	96	86	94	88	93	94
	<b>CHO1 Total</b>	<b>1292</b>	<b>95</b>	<b>95</b>	<b>95</b>	<b>92</b>	<b>95</b>	<b>94</b>	<b>87</b>	<b>90</b>	<b>89</b>	<b>91</b>	<b>92</b>
CHO2	Galway	916	97	97	97	96	97	97	95	96	98	96	96
	Mayo	388	95	95	95	91	95	95	90	93	99	93	90
	Roscommon	210	100	100	100	98	100	100	98	99	99	99	99
	<b>CHO2 Total</b>	<b>1514</b>	<b>97</b>	<b>97</b>	<b>97</b>	<b>95</b>	<b>97</b>	<b>97</b>	<b>94</b>	<b>96</b>	<b>98</b>	<b>96</b>	<b>95</b>
CHO3	Clare	359	97	97	97	na	97	97	87	92	95	96	95
	Limerick	475	93	93	93	na	93	93	88	89	89	90	91
	Tipperary NR/East Limerick	465	92	92	92	na	92	92	83	85	91	92	92
	<b>CHO3 Total</b>	<b>1299</b>	<b>94</b>	<b>94</b>	<b>94</b>	<b>na</b>	<b>94</b>	<b>94</b>	<b>86</b>	<b>88</b>	<b>91</b>	<b>92</b>	<b>92</b>
CHO4	North Cork	340	96	96	95	90	96	95	84	87	90	92	94
	North South Lee	1344	96	96	96	91	96	96	85	89	91	93	94
	West Cork	170	91	91	91	88	91	91	80	86	85	86	89
	Kerry	423	96	96	96	91	96	95	88	90	90	91	92
<b>CHO4 Total</b>	<b>2277</b>	<b>96</b>	<b>96</b>	<b>95</b>	<b>91</b>	<b>96</b>	<b>95</b>	<b>85</b>	<b>89</b>	<b>90</b>	<b>92</b>	<b>93</b>	
CHO5	Carlow/Kilkenny	454	96	96	96	91	96	95	85	90	94	95	94
	South Tipperary	294	96	96	96	91	96	96	87	91	92	95	93
	Waterford	423	95	95	95	90	95	95	85	89	91	93	93
	Wexford	513	97	97	97	90	97	97	87	90	94	95	95
<b>CHO5 Total</b>	<b>1684</b>	<b>96</b>	<b>96</b>	<b>96</b>	<b>90</b>	<b>96</b>	<b>96</b>	<b>86</b>	<b>90</b>	<b>93</b>	<b>95</b>	<b>94</b>	
CHO6	Dublin South	431	96	96	96	92	96	96	88	91	94	95	96
	Dublin South East	355	93	93	93	90	93	93	87	89	89	91	90
	Wicklow	426	89	89	89	81	89	89	78	81	84	87	87
	<b>CHO6 Total</b>	<b>1212</b>	<b>93</b>	<b>93</b>	<b>93</b>	<b>88</b>	<b>93</b>	<b>93</b>	<b>84</b>	<b>87</b>	<b>89</b>	<b>91</b>	<b>91</b>
CHO7	Dublin South City	394	94	94	94	85	94	93	81	84	85	88	88
	Dublin South West	557	96	96	96	93	96	96	88	92	91	95	95
	Dublin West	619	93	93	93	83	93	93	81	83	89	90	91
	Kildare/West Wicklow	904	95	95	95	91	95	95	88	90	93	94	93
<b>CHO7 Total</b>	<b>2474</b>	<b>95</b>	<b>95</b>	<b>95</b>	<b>88</b>	<b>95</b>	<b>95</b>	<b>85</b>	<b>88</b>	<b>90</b>	<b>92</b>	<b>92</b>	
CHO8	Laois/Offaly	550	97	97	97	97	97	97	88	91	93	95	96
	Longford/Westmeath	417	98	98	98	98	98	98	90	94	93	97	96
	Louth	484	94	94	94	88	94	94	86	82	90	86	91
	Meath	769	95	95	95	89	95	95	86	81	88	84	91
<b>CHO8 Total</b>	<b>2220</b>	<b>96</b>	<b>96</b>	<b>96</b>	<b>92</b>	<b>96</b>	<b>96</b>	<b>87</b>	<b>86</b>	<b>91</b>	<b>90</b>	<b>93</b>	
CHO9	Dublin North West	813	92	92	92	86	92	92	80	85	87	89	89
	Dublin North Central	418	90	90	90	79	90	90	73	77	82	83	84
	Dublin North	991	90	90	90	83	90	90	80	83	85	87	87
	<b>CHO9 Total</b>	<b>2222</b>	<b>91</b>	<b>91</b>	<b>91</b>	<b>83</b>	<b>91</b>	<b>91</b>	<b>79</b>	<b>82</b>	<b>85</b>	<b>87</b>	<b>87</b>
<b>Ireland</b>	<b>16194</b>	<b>95</b>	<b>95</b>	<b>95</b>	<b>90</b>	<b>95</b>	<b>94</b>	<b>86</b>	<b>88</b>	<b>90</b>	<b>92</b>	<b>92</b>	

na=not available

\*The denominator/number in cohort varied slightly according to vaccine. D<sub>3</sub>T<sub>3</sub> cohorts shown here.

Please note while North Lee and South Lee are two separate LHOs their combined immunisation uptake data are reported here.

CHO3 Hib<sub>b</sub> figures were not reported as accurate data were not available

### Appendix 3

Local Health Office (LHO) Abbreviations (used in maps in this report)	Local Health Office (LHO)
CE	Clare
CN/MN	Cavan/Monaghan
CW/KK	Carlow/Kilkenny
DL	Donegal
DN	Dublin North
DNC	Dublin North Central
DNW	Dublin North West
DS	Dublin South
DSC	Dublin South City
DSE	Dublin South East
DSW	Dublin South West
DW	Dublin West
G	Galway
KE/WW	Kildare/West Wicklow
KY	Kerry
L	Limerick
LD/WD	Longford/Westmeath
LH	Louth
LS/OY	Laois/Offaly
MH	Meath
MO	Mayo
NC	North Cork
NSL*	North South Lee*
RN	Roscommon
SO/LM	Sligo/Leitrim
TN/EL	Tipperary North /East Limerick
TS	South Tipperary
WC	West Cork
WD	Waterford
WX	Wexford
WW	Wicklow

\*Please note while North Lee and South Lee are two separate LHOs their combined immunisation uptake data are reported here